

FORD**VOLVO****FORD MOTOR COMPANY**

Siège Social (WHQ)
One American Road
DEARBORN
MI 48126
Etats-Unis



William CLAY FORD Jr.,
 chairman of the board,
 chief executive officer

Greg C. SMITH,
 vice-chairman - chief operating officer



James J. PADILLA,
 president and chief
 operating officer

Executive vice-presidents

Lewis W. BOOTH,
 chairman Ford of Europe and Premier
 Automotive Group

Mark FIELDS,
 president, The Americas

Don LECLAIR,
 chief financial officer

Mark SCHULZ,
 president, international operations

Anne STEVENS,
 chief operating officer, The Americas

Group vice-presidents

Mike BANNISTER,
 chairman & chief executive officer, Ford
 Motor Credit Company

John FLEMING,
 president and chief executive officer, Ford
 of Europe

Derrick KUZAK,
 product development, The Americas

Joe LAYMON,
 corporate human resources and labor
 affairs

Steve LYONS,
 north America Marketing, sales and service

J MAYS,
 design and chief creative officer

Ziad OJAKLI,
 corporate affairs

Richard PARRY-JONES,
 global product development and chief
 technical officer

Dave SZCZUPAK,
 manufacturing, The Americas

Senior vice-presidents

Marv ADAMS,
 corporate strategy and chief information
 officer

Thomas K. BROWN,
 global purchasing

David LEITCH,
 general counsel

Hans-Olov OLSSON,
 chief marketing officer ; non-executive
 chairman Volvo

Vice-presidents

Fredrik ARP,
 president and chief executive officer, Volvo
 Cars Corp.

Joseph BAKAJ,
 product development, Ford of Europe

Stephen BIEGUN,
 international governmental affairs

Mei Wei CHENG,
 chairman and chief executive officer, Ford
 Motor (China) Ltd.

Susan CISCHKE,
 environmental and safety engineering

Francisco CODINA,
 president, Ford customer service division

Deborah COLEMAN,
 global quality

Peter DANIEL,
 chief operating officer, Ford Asia-Pacific and
 Africa

Felicia FIELDS,
 human resources

Bennie FOWLER,
 advanced manufacturing engineering, the
 Americas

Barbara GASPER,
 investor relations

Al GIOMBETTI,
 president, Lincoln and Mercury

Louise GOESER,
 president and chief executive officer, Ford
 Mexico

James GOUIN,
 controller

Steve HAMP,
 chief of staff

Darryl HAZEL,
 vice-president, marketing

Joseph HINRICHS,
 North America vehicle operations

Charlie HOLLERAN,
 chief communications officer

Antonio MACIEL,

president, Ford South America

Paul MASCARENAS,
 engineering, The Americas product deve-
 lopment

Martin MULLOY,
 labor affairs

Tim O'BRIEN,
 corporate relations

Stephen ODELL,
 vice-president, marketing, sales and service,
 Ford Europe

John PARKER,
 executive vice-president and assistant to
 the president, Mazda

Ann Marie PETACH,
 treasurer

Geoffrey POLITES,
 chief executive officer, Jaguar and Land
 Rover

Barb SAMARDZICH,
 powertrain operations

Gerhard SCHMIDT,
 research and advanced engineering

Robert SHANKS,
 vice-president and controller, The Americas

James TETREAU,
 vice-president, manufacturing

Al VER,
 chief executive officer /COO, Automotive
 Components Holdings LLC

AJ WAGNER,
 president, Ford Credit Company North
 America

GROUPE FMC FRANCE SAS

Siège social
34 rue de la Croix de Fer
78122 SAINT-GERMAIN-EN-LAYE



Eric SAINT-FRISON,
 président



Didier PEDELMAS,
 vice-président



Maria STENSTROM,
 vice-président

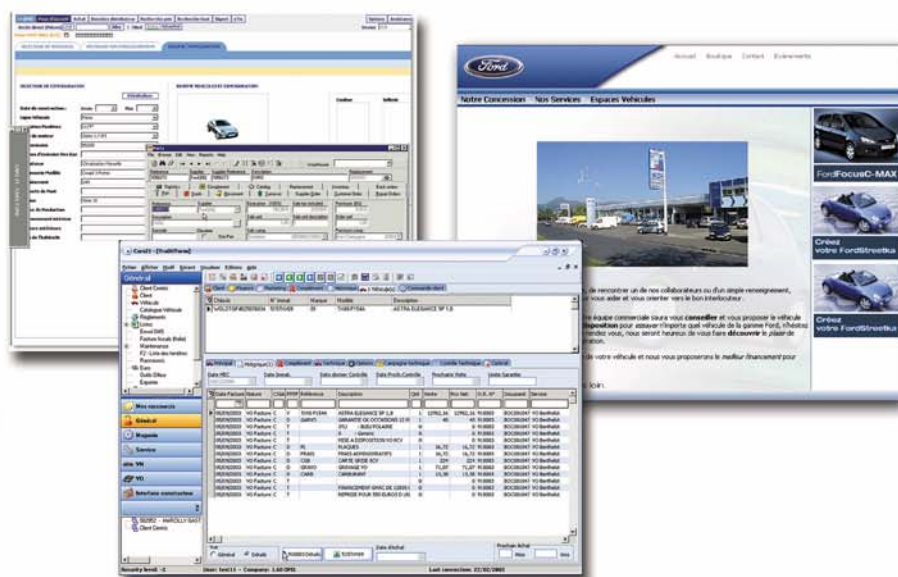
DATAFIRST

Innovation and Excellence for the Automotive Industry



Une offre progiciels et services personnalisée pour tous les acteurs de la Distribution Automobile.

- Un interlocuteur unique
- Un accompagnement personnalisé
- Une solution multi-marques, multi-sites
- Des outils d'aide à la décision
- Des outils de fidélisation : Datapass, SMS,...
- Une synergie avec les acteurs majeurs de l'internet
- Une solution locale ou centralisée en ASP
- Plateforme standard Microsoft™



Votre solution informatique globale :

DMS
CRM
Internet

Présence pan-européenne :

14 pays, 10 langues
13.000 utilisateurs

Des références prestigieuses
Ils nous font confiance :

BMW
Chevrolet
Citroën
Dacia
Ford
Jaguar
Land Rover
Mazda
Mini
Nissan
Opel
Peugeot
Renault
Saab
Volvo

...



www.datafirst.fr